

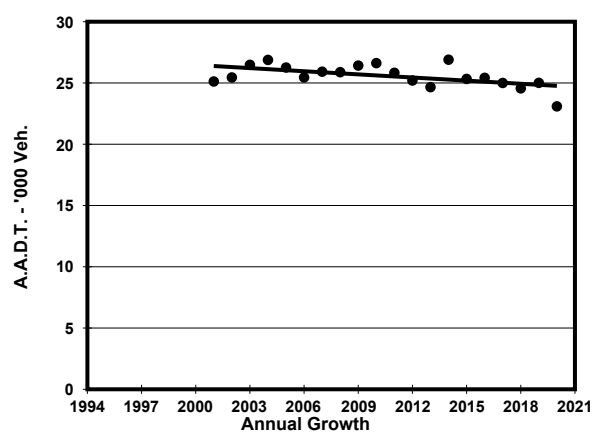
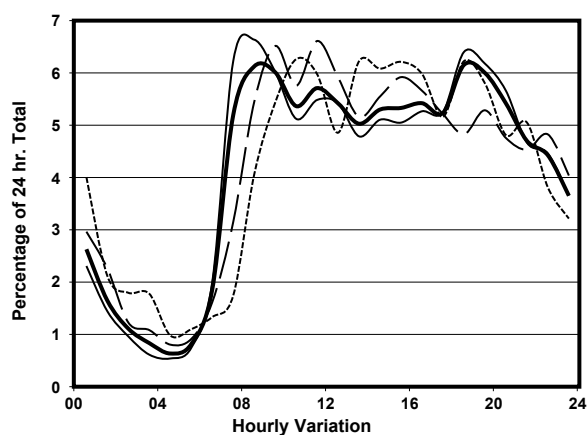
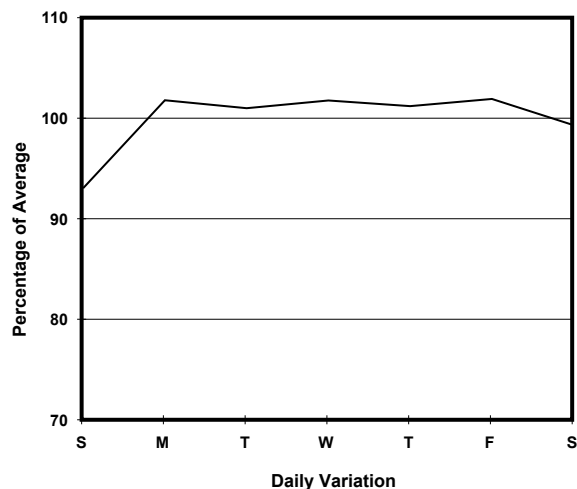
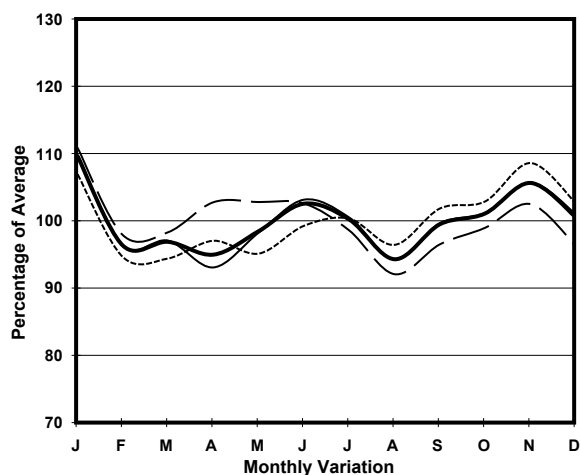
YEAR 2020

LINK TAI HANG RD (from KA NING PATH to LAI TAK TSUEN RD)

CORE STATION 1024  
ROAD NETWORK MAJOR  
ROAD TYPE DISTRICT DISTRIBUTOR



## 1. TRAFFIC FLOW VARIATION AND GROWTH



— All day      - - - - - Mon. - Fri.      ..... Sat.      . . . . . Sun.

## 2. TRAFFIC CHARACTERISTICS (BY DIRECTION)

Parameter	All - Day	Mon. - Fri.	Sat.	Sun.
<b>SOUTH BOUND</b>				
A.A.D.T.	12520	12670	12290	12360
R 12 / 24 - %	64.2	64.2	65.6	62.9
R 16 / 24 - %	86.3	87	85.2	83.4
AM Peak Hour	0900-1000	0900-1000	0900-1000	0900-1000
One-way flow at AM peak hour	750	770	860	540
T - % (AM)	-	-	-	-
PM Peak Hour	1800-1900	1800-1900	1600-1700	1600-1700
One-way flow at PM peak hour	780	840	720	830
T - % (PM)	-	-	-	-
Prop.of commercial vehicles - 16 hr.	-	-	-	-
<b>NORTH BOUND</b>				
A.A.D.T.	10570	10870	10620	9250
R 12 / 24 - %	68.7	69.8	65.8	66
R 16 / 24 - %	87.5	88.5	85	84.2
AM Peak Hour	0800-0900	0800-0900	0800-0900	0900-1000
One-way flow at AM peak hour	770	850	740	640
T - % (AM)	-	-	-	-
PM Peak Hour	1800-1900	1800-1900	1700-1800	1800-1900
One-way flow at PM peak hour	640	660	590	570
T - % (PM)	-	-	-	-
Prop.of commercial vehicles - 16 hr.	-	-	-	-

## 3. OTHER INFORMATION AND COMMENT